

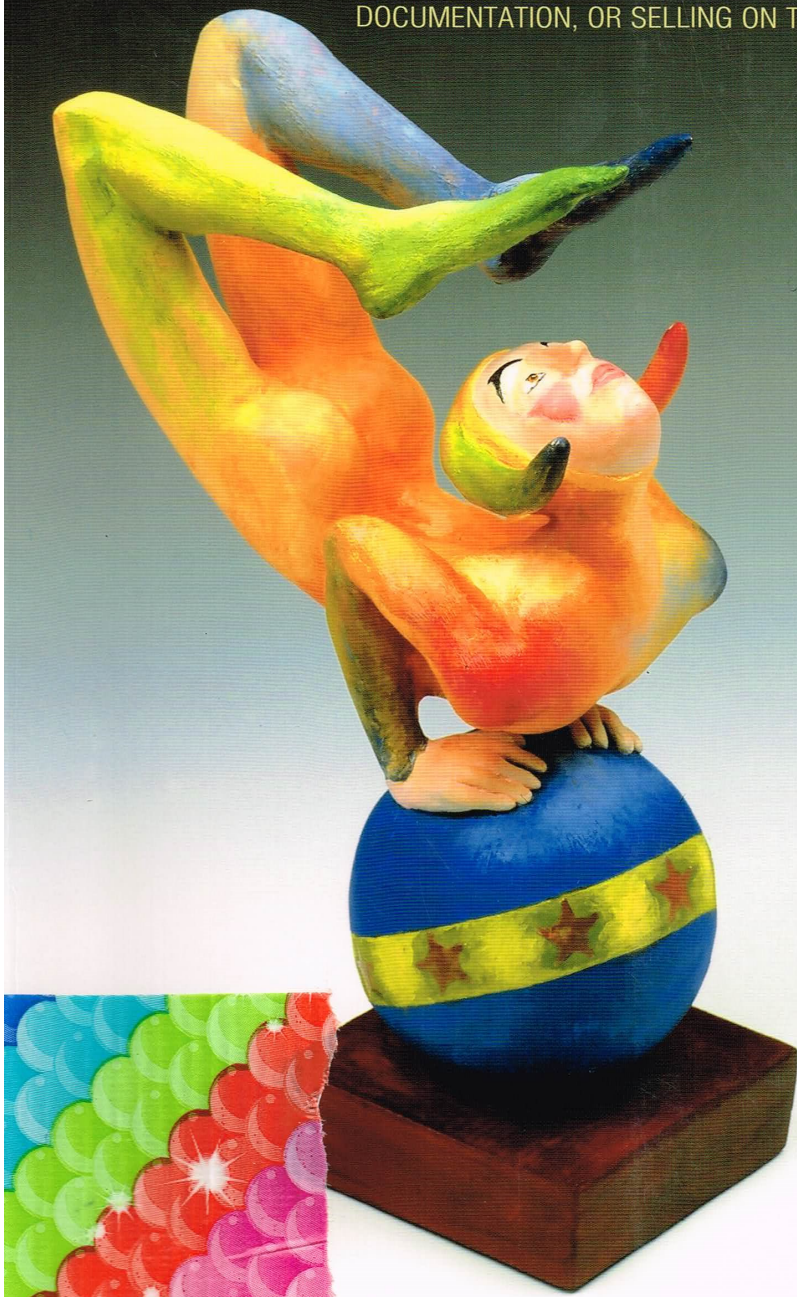


A LARK PHOTOGRAPHY BOOK

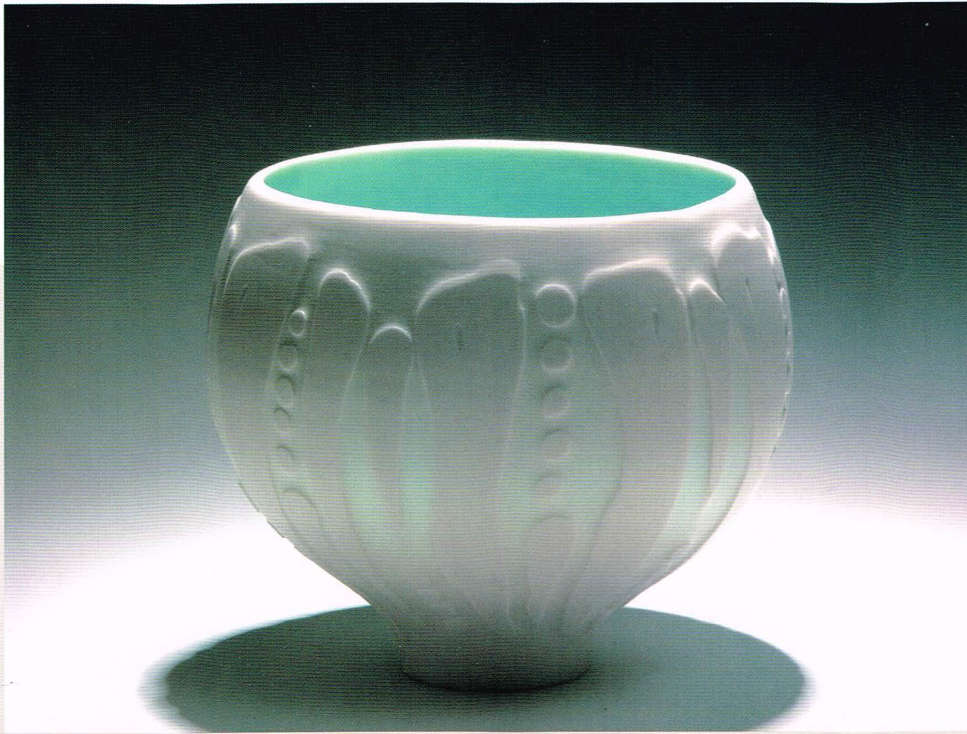
PHOTOGRAPHING

Arts, Crafts & Collectibles

TAKE GREAT DIGITAL PHOTOS FOR PORTFOLIOS,
DOCUMENTATION, OR SELLING ON THE WEB

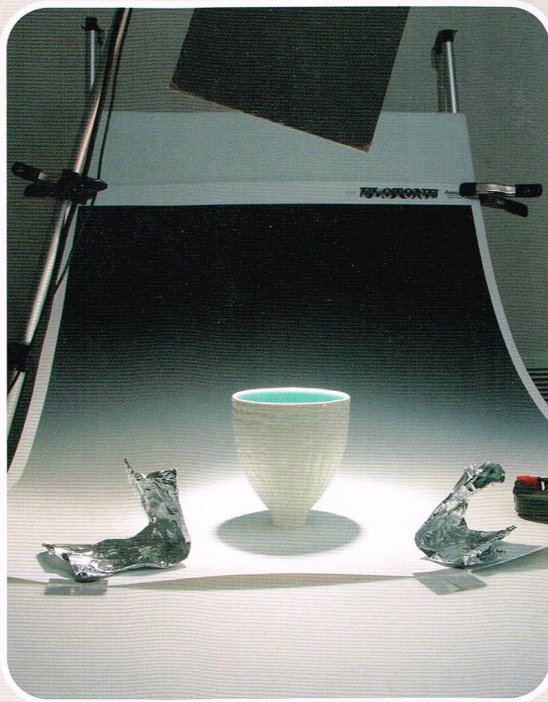


STEVE MELTZER



Antoinette Badenhorst, artist

A spotlight is focused into and through this translucent porcelain bowl. The camera is almost at eye level with the work because it is less important to see the interior of the bowl than to show the exterior surface decoration.



Antoinette Badenhorst, artist

This setup shows the way a similar porcelain bowl was photographed. The folded aluminum foil reflectors throw sparkling light onto the sides of the bowl. The card at the top was attached to the spotlight to keep light from spilling into the camera lens.

When the shape of a piece is most important, take a different approach. Start by lowering the camera until it is barely above the table top. The back rim and the interior of the bowl won't be visible when shooting from this low angle, and such an extreme profile is generally not a very pleasing view. So slowly raise the camera and watch as the back rim and interior become visible in the viewfinder. At some point you'll find a camera height that works best. I usually create an image with most of art piece's rim visible along with a touch of the interior.